

JUN 27 1983

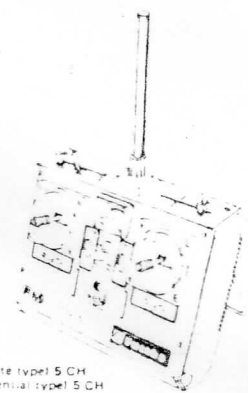
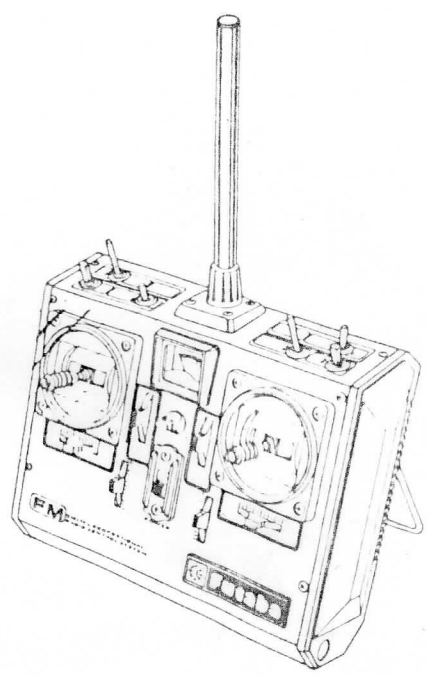
# Futaba

## DIGITAL PROPORTIONAL RADIO CONTROL

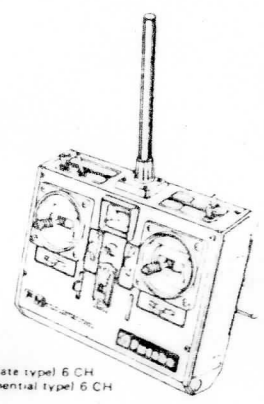
### DIAGRAMS :

#### FP-7FG · FP-6FG · FP-5FG

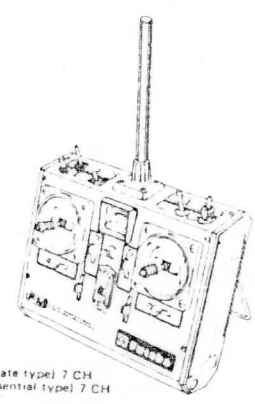
- Newly designed case and new open gimbal stick with adjustable tension and lever head.
- Aileron - rudder mixing (FP-T7FG), ideal for giant scale and quarter scale models and gliders.
- Rudder - elevator mixing (FP-T7FG) ideal for V-tailed aircrafts and gliders.
- Main channel servo reversing switches (FP-T5FG, T6FG, T7FG). Very convenient when ever reversing is necessary.
- Aileron and elevator dual rate on/off (FP-5FG/K, FP-6FG/K) plus rudder dual on/off (FP-7FG/K).
- Aileron and elevator Exponential on/off (FP-5FG/E, FP-6FG/E), plus rudder Exponential on/off (FP-7FG/E).
- Aileron, elevator and rudder ATVs (Adjustable Travel Volume) (FP-T7FG) Permit independent left or right, (up or down) adjustments to attain precise alignment as desired.
- Trainer system offers an easy training of flight for beginners.
- Adjustable Throttle Limiter (ATL) for throttle (FP-T5FG, T6FG, T7FG).



FP-5FG/K (Dual-rate type) 5 CH  
FP-5FG/E (Exponential type) 5 CH



FP-6FG/K (Dual-rate type) 6 CH  
FP-6FG/E (Exponential type) 6 CH

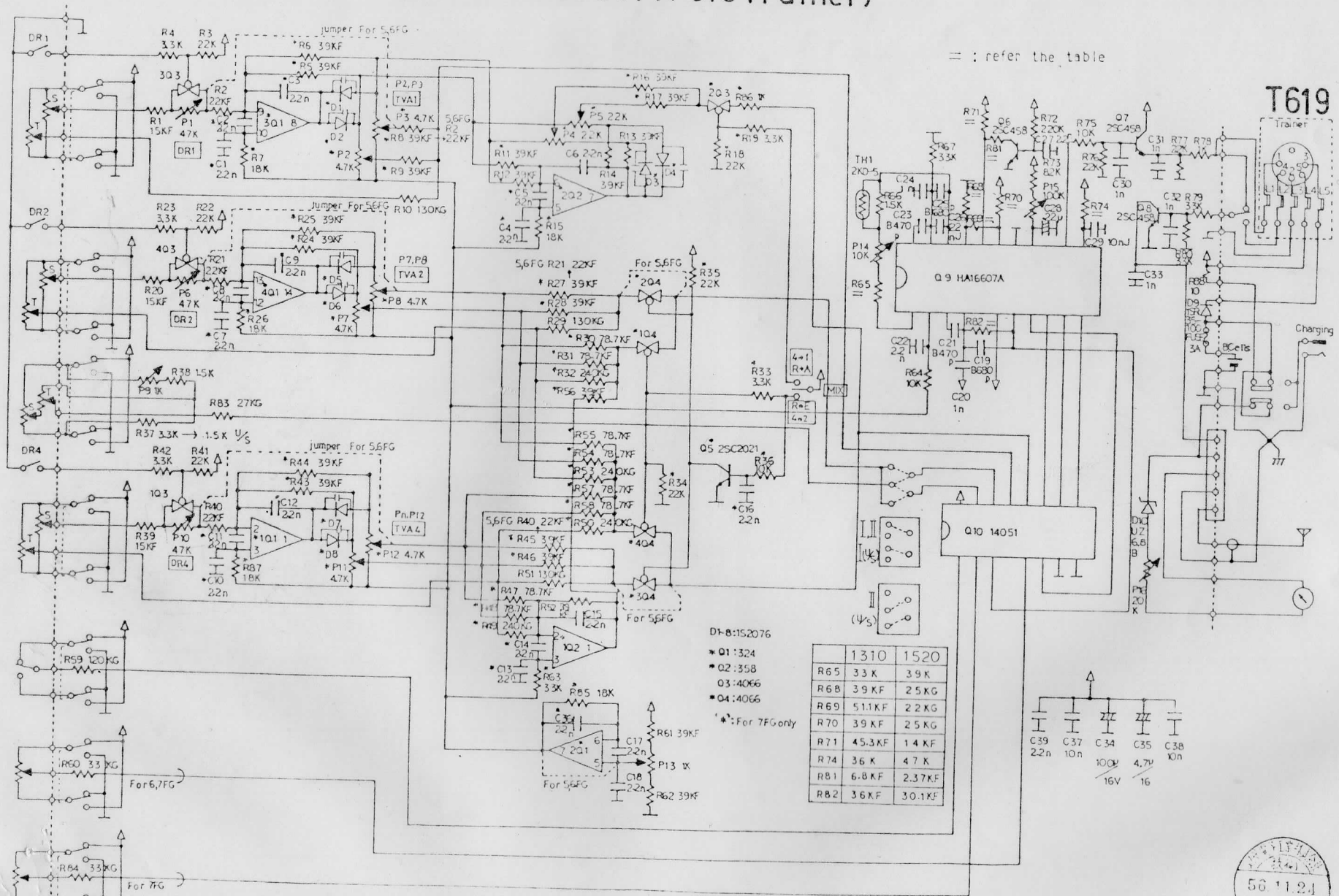


FP-7FG/K (Dual-rate type) 7 CH  
FP-7FG/E (Exponential type) 7 CH

Associated Merchandise Co., Inc.  
#1 Michizaki Bldg.  
No. 6-16 Shiba, 2-chome, Minami-Shinjyuku-ku  
TOKYO 106, JAPAN

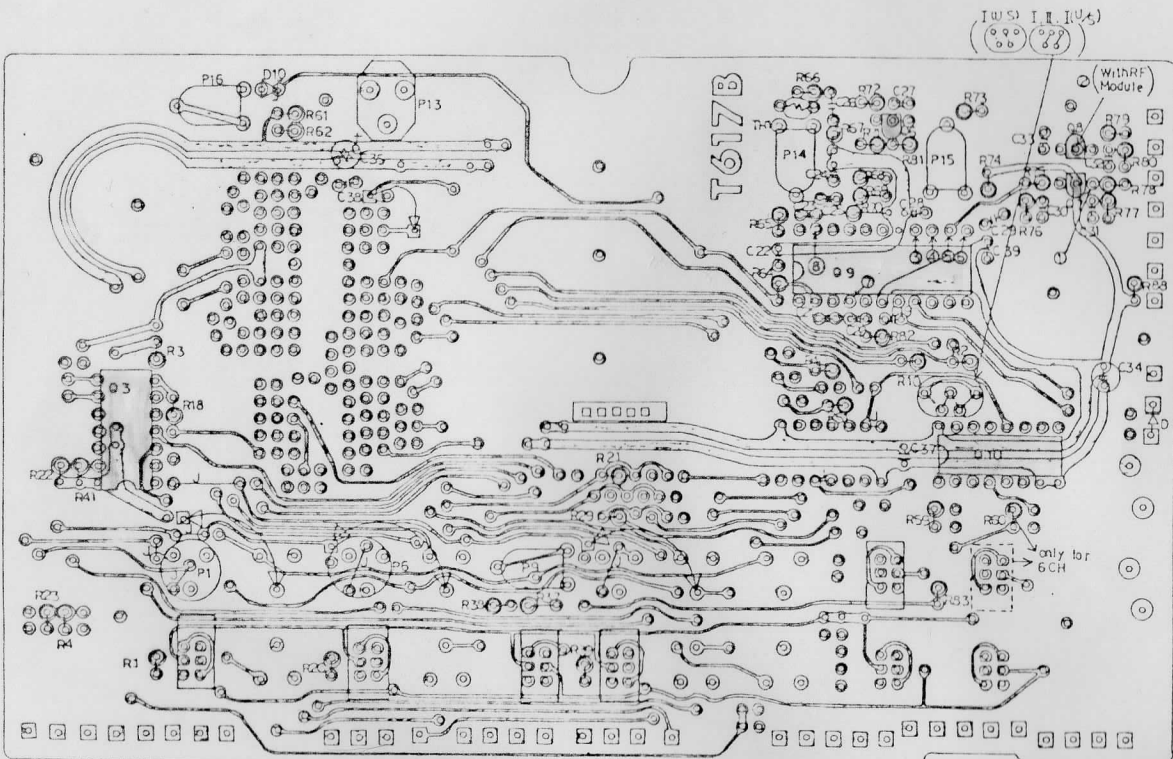
**FUTABA TRADING CO., LTD.**  
Cable Address: RADIOMODEL TOKYO  
Twx: J23826 FTCKEY  
HAKUYO NO 2 BLDG.  
KANDA SURUGADAI 1-7, CHIYODA KU, TOKYO 101

# T617B 5,6,7FGK Encoder (T 619 Trainer)



# T617B P.C.B. ASSEMBLY 5,6FGK (1310,1520)

$\frac{1}{5}$  others

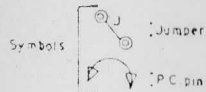


(100 111 111 111 111 111)

- |     |                   |     |         |     |          |
|-----|-------------------|-----|---------|-----|----------|
| R1  | 15KF              | C19 | B680P   | P1  | 47K      |
| R2  | 22KF              | C20 | 1n      | P6  | 47K      |
| R3  | 22K               | C21 | B470P   | P9  | 1K       |
| R4  | 33K               | C22 | 22n     | P13 | 1K       |
| R10 | 130KG             | C23 | B470P   | P14 | 10K      |
| R20 | 15KF              | C24 | 1n      | P15 | 100K     |
| R21 | 22KF              | C25 | B680P   | P16 | 20K      |
| R22 | 22K               | C26 | 22nJ    |     |          |
| R23 | 33K               | C27 | 2.2n    |     |          |
| R29 | 130KG             | C28 | 2.2n    | 03  | 4066     |
| R37 | US15K others 33k  | C29 | 10nJ    | 06  | 25C458   |
| R38 | 15K               | C30 | 1n      | 07  | 25C458   |
| R39 | 15KF              | C31 | 1n      | 08  | 25C458   |
| R40 | 22KF              | C32 | 1n      | 09  | HA16607A |
| R41 | 22K               | C33 | 1n      | Q10 | 14051    |
| R51 | 150KG             | C34 | 100µ16V | TH1 | 2KD-5    |
| R59 | 120KG             | C35 | 47µ16V  |     |          |
| R60 | 33KG only for 6ch | C37 | 10n     | D9  | 15R35    |
| R61 | 99KF              | C38 | 10n     | D10 | UZ688    |
| R62 | 39KF              | C39 | 2.2n    |     |          |
| R64 | 10K               |     |         |     |          |
| R66 | 1.5K              |     |         |     |          |
| R67 | 33K               |     |         |     |          |
| R72 | 220K              |     |         |     |          |
| R73 | 82K               |     |         |     |          |
| R75 | 10K               |     |         |     |          |
| R76 | 22K               |     |         |     |          |
| R77 | 2.2K              |     |         |     |          |
| R78 | 1K                |     |         |     |          |
| R79 | 33K               |     |         |     |          |
| R80 | 33K               |     |         |     |          |
| R83 | 27KG              |     |         |     |          |
| R88 | 10                |     |         |     |          |

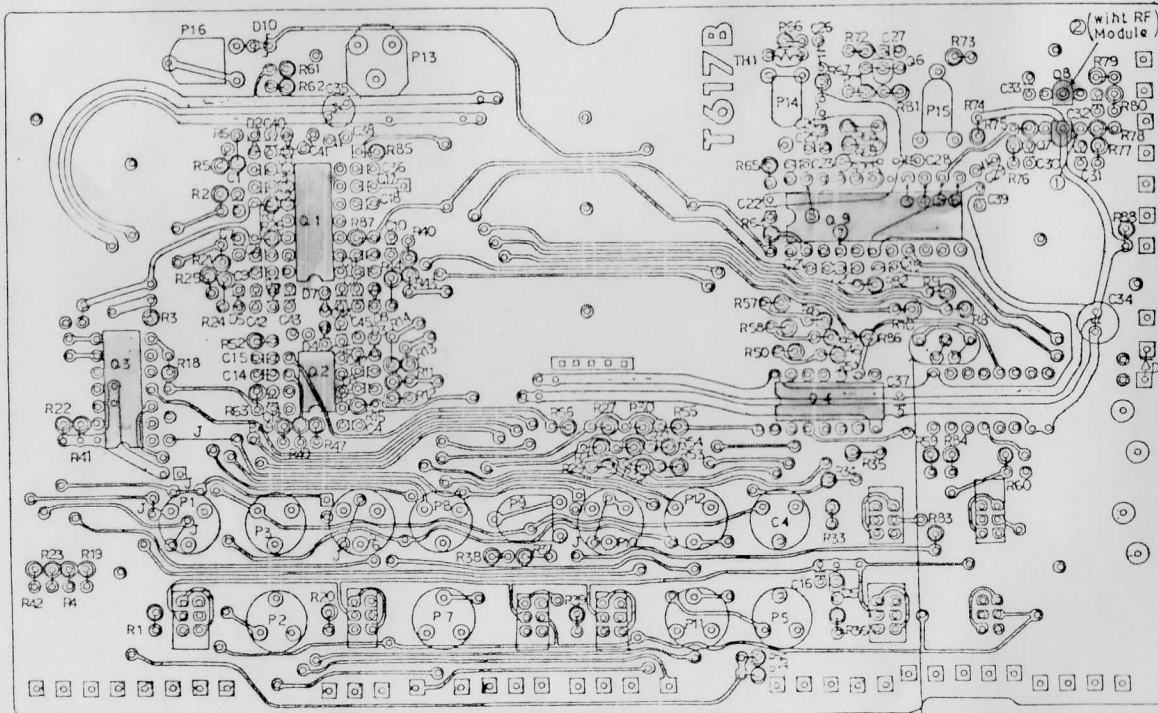
|      | 1310   | 1520   |
|------|--------|--------|
| R 65 | 33K    | 39K    |
| R 68 | 39KF   | 25KG   |
| R 69 | 511KF  | 22KG   |
| R 70 | 39KF   | 25KG   |
| R 71 | 453KF  | 14KF   |
| R 74 | 36K    | 47K    |
| R 81 | 6.81KF | 2.37KF |
| R 82 | 36KF   | 30.1KF |

10R-810074



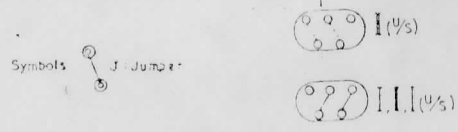
# T617B P.C.B.ASSEMBLY 7FGK (1310, 1520)

U/S others



- |     |              |     |        |     |         |      |           |
|-----|--------------|-----|--------|-----|---------|------|-----------|
| R1  | 15KF         | R51 | 130KG  | C1  | 2.2n    | * Q1 | 324       |
| R2  | 22KF         | R52 | 39KF   | S   |         | * Q2 | 358       |
| R3  | 22K          | R53 | 240KG  | C18 |         | * Q3 | 4066      |
| R4  | 3.3K         | R54 | 78.7KF | C19 | B680P   | * Q4 | 4066      |
| R5  | 39KF         | R55 | 78.7KF | C20 | 1n      | Q5   | 25C2021   |
| R6  | 39KF         | R56 | 39KF   | C21 | B470P   | Q6   | 25C458    |
| R7  | 18K          | R57 | 78.7KF | C22 | 2.2n    | S    |           |
| R8  | 39KF         | R58 | 78.7KF | C23 | B470P   | Q8   |           |
| R9  | 39KF         | R59 | 120KG  | C24 | 1n      | Q9   | HA16607A  |
| R10 | 130KG        | R60 | 33KG   | C25 | B680P   | Q10  | 4051      |
| R11 | 39KF         | R61 | 39KF   | C26 | 2.2nJ   |      |           |
| R12 | 39KF         | R62 | 39KF   | C27 | 2.2n    |      |           |
| R13 | 39KF         | R63 | 33K    | C28 | .22u    |      |           |
| R14 | 39KF         | R64 | 10K    | C29 | 10nJ    |      |           |
| R15 | 18K          | R66 | 1.5K   | C30 | ic 331n |      |           |
| R16 | 39KF         | R67 | 33K    | C34 | 100u16V | D1   | 152076    |
| R17 | 39KF         | R72 | 220K   | C35 | 4.7u16V | S    |           |
| R18 | 22K          | R73 | 82K    | C36 | 2.2n    | D8   |           |
| R19 | 3.3K         | R75 | 10K    | C37 | 10n     | Q9   | 15R35-100 |
| R20 | 15KF         | R76 | 22K    | C38 | 10n     | D10  | UZ5.8B    |
| R21 | 22KF         | R77 | 2.2K   | C39 | 2.2n    |      |           |
| R22 | 22K          | R78 | 1K     | C47 |         |      |           |
| R23 | 3.3K         | R79 | 33K    |     |         |      |           |
| R24 | 39KF         | R80 | 33K    |     |         |      |           |
| R25 | 39KF         | R83 | 27KG   |     |         |      |           |
| R26 | 18K          | R84 | 33KG   |     |         |      |           |
| R27 | 39KF         | R85 | 18K    |     |         |      |           |
| R28 | 39KF         | R86 | 1K     |     |         |      |           |
| R29 | 130KG        | R87 | 18K    |     |         |      |           |
| R30 | 78.7KF       | R88 | 10     |     |         |      |           |
| R31 | 78.7KF       |     |        | P1  | 4.7K    |      |           |
| R32 | 240KG        |     |        | P2  | 4.7K    |      |           |
| R33 | 3.3K         |     |        | P3  | 4.7K    |      |           |
| R34 | 22K          |     |        | P4  | 2.2K    |      |           |
| R35 | 22K          |     |        | P5  | 2.2K    |      |           |
| R36 | 10K          |     |        | P6  | 4.7K    |      |           |
| R37 | US 1.5K      |     |        | P7  | 4.7K    |      |           |
|     | others: 3.3K |     |        | P8  | 4.7K    |      |           |
| R38 | 15K          |     |        | P9  | 1K      |      |           |
| R39 | 15KF         |     |        | P10 | 4.7K    |      |           |
| R40 | 22KF         |     |        | P11 | 4.7K    |      |           |
| R41 | 22K          |     |        | P12 | 4.7K    |      |           |
| R42 | 3.3K         |     |        | P13 | 1K      |      |           |
| R43 | 39KF         |     |        | P14 | 10K     |      |           |
| R44 | 39KF         |     |        | P15 | 100K    |      |           |
| R45 | 39KF         |     |        | P16 | 20K     |      |           |
| R46 | 39KF         |     |        |     |         |      |           |
| R47 | 78.7KF       |     |        |     |         |      |           |
| R48 | 78.7KF       |     |        |     |         |      |           |
| R49 | 240KG        |     |        |     |         |      |           |
| R50 | 240KG        |     |        |     |         |      |           |

TH1 2KD-5

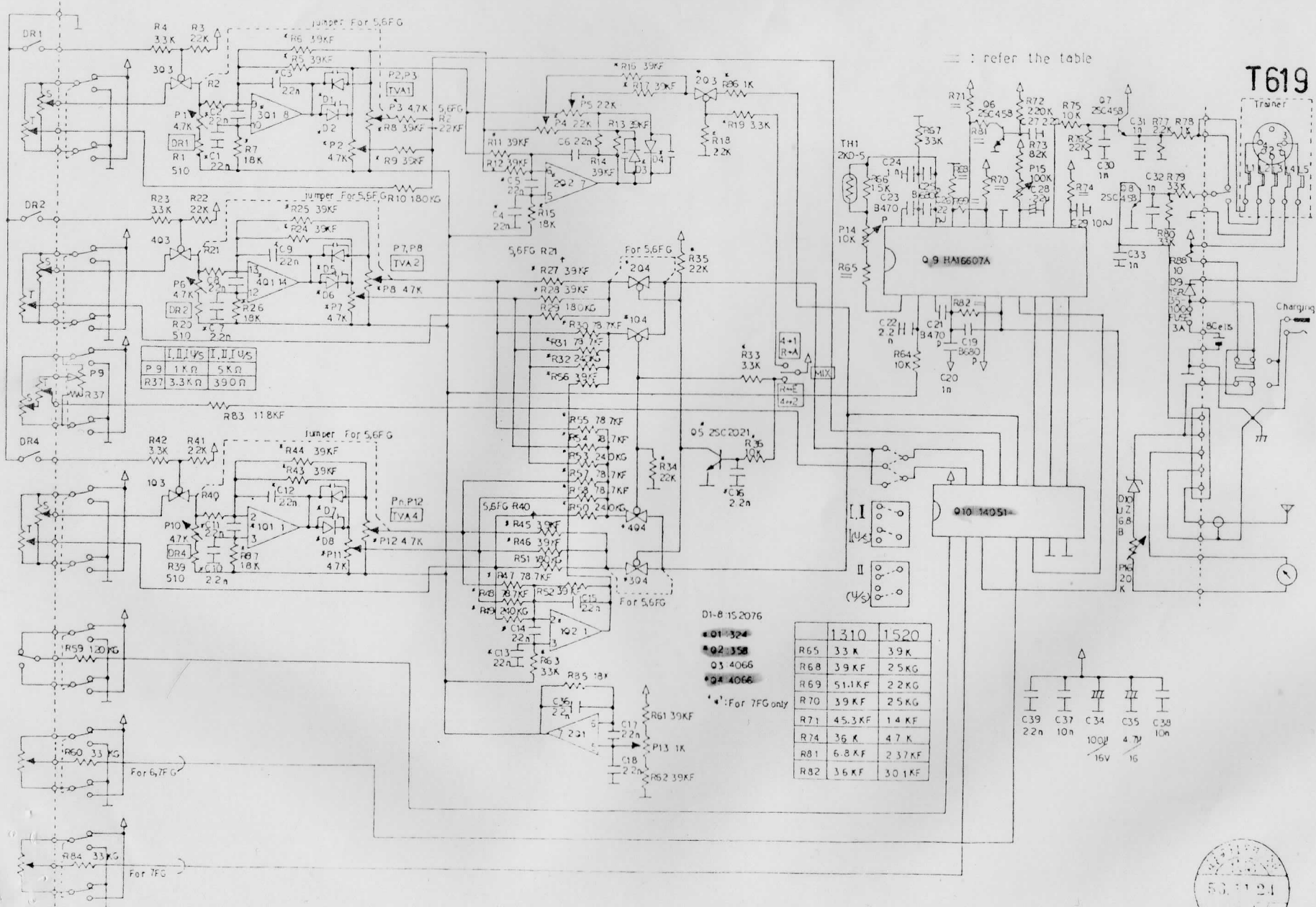


|     | 1310   | 1520   |
|-----|--------|--------|
| R65 | 3.3K   | 39K    |
| R68 | 39KF   | 25KG   |
| R69 | 51.1KF | 22KG   |
| R70 | 39KF   | 25KG   |
| R71 | 45.3KF | 14KF   |
| R74 | 36K    | 47K    |
| R81 | 6.01KF | 2.37KF |
| R82 | 36KF   | 30.1KF |

10R-810075



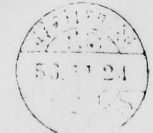
# T617B 5,6,7 FGE Encoder (T619 Trainer)



|     |       |      |   |   |   |   |   |
|-----|-------|------|---|---|---|---|---|
| I   | I     | I    | I | I | I | I | I |
| P9  | 1KΩ   | 5KΩ  |   |   |   |   |   |
| R37 | 3.3KΩ | 390Ω |   |   |   |   |   |

|     | 1310  | 1520 |
|-----|-------|------|
| R65 | 33K   | 39K  |
| R68 | 39K   | 25K  |
| R69 | 51.1K | 22K  |
| R70 | 39K   | 25K  |
| R71 | 45.3K | 14K  |
| R74 | 36K   | 47K  |
| R81 | 6.8K  | 237K |
| R82 | 36K   | 301K |

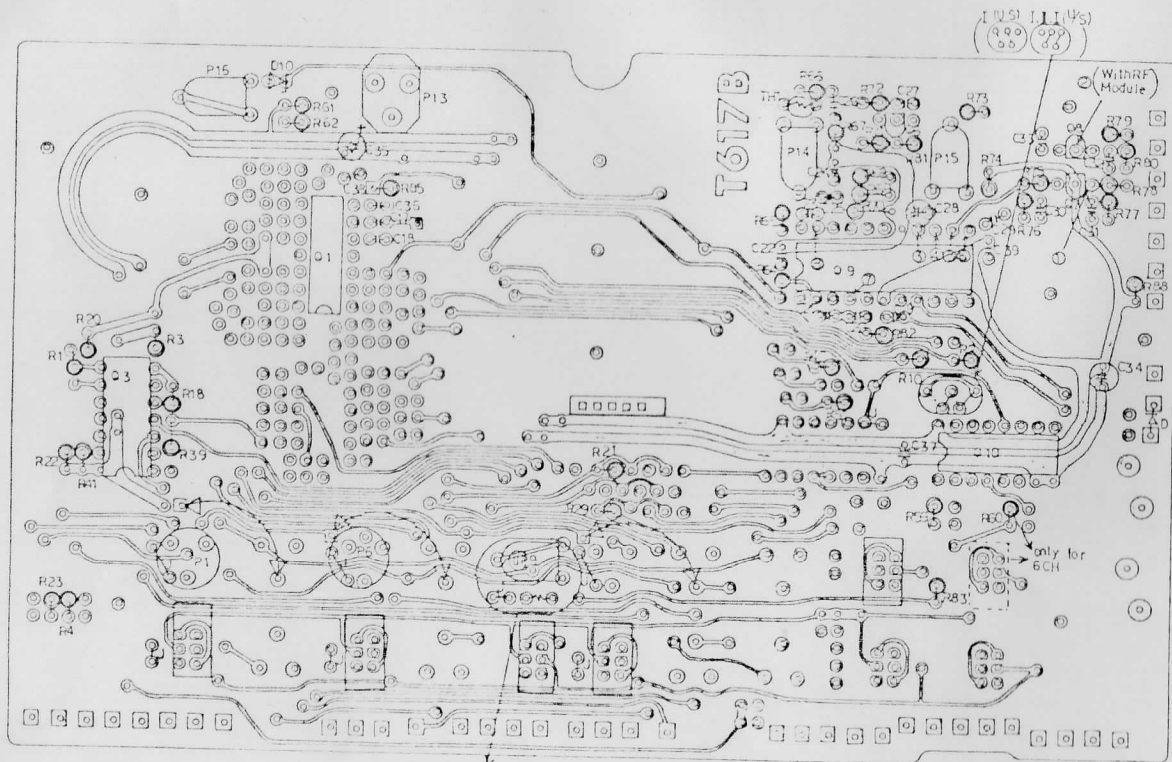
|        |     |     |     |     |      |     |      |     |     |
|--------|-----|-----|-----|-----|------|-----|------|-----|-----|
| C39    | 22n | C37 | 10n | C34 | 100μ | C35 | 4.7μ | C38 | 10μ |
| 15V 16 |     |     |     |     |      |     |      |     |     |





# T617B P.C.B. ASSEMBLY 56FGE (1310, 1520)

$\Psi_5$  others



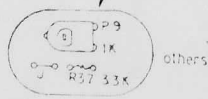
1 U51 111 ( $\Psi_5$ )  
(990) (990)  
(66) (66)

- R1 510
- R2 147KF
- R3 22K
- R4 33K
- RK0 130KG
- R20 510
- R21 147KF
- R22 22K
- R23 33K
- R29 130KG
  
- R39 510
- R40 147KF
- R41 22K
- R51 130KG
- R59 120KG
- R60 33KG only for 6ch
- R61 39KF
- R62 39KF
- R64 10K
- R66 1.5K
- R67 33K
- R72 220K
- R73 82K
- R75 10K
- R76 22K
- R77 22K
- R78 1K
- R79 33K
- R80 33K
- R83 118KF
- R88 10
- R85 18K

- C17 2.2n
- C18 2.2n
- C19 3680P
- C20 1a
- C21 B470P
- C22 2.2n
- C23 B470P
- C24 1a
- C25 B680P
- C26 2.2nJ
- C27 2.2n
- C28 2.2u
- C29 10nJ
- C30 1n
- C31 1n
- C32 1n
- C33 1n
- C34 100u16V
- C35 4.7u16V
- C36 2.2n
- C37 10n
- C38 10n
- C39 2.2n

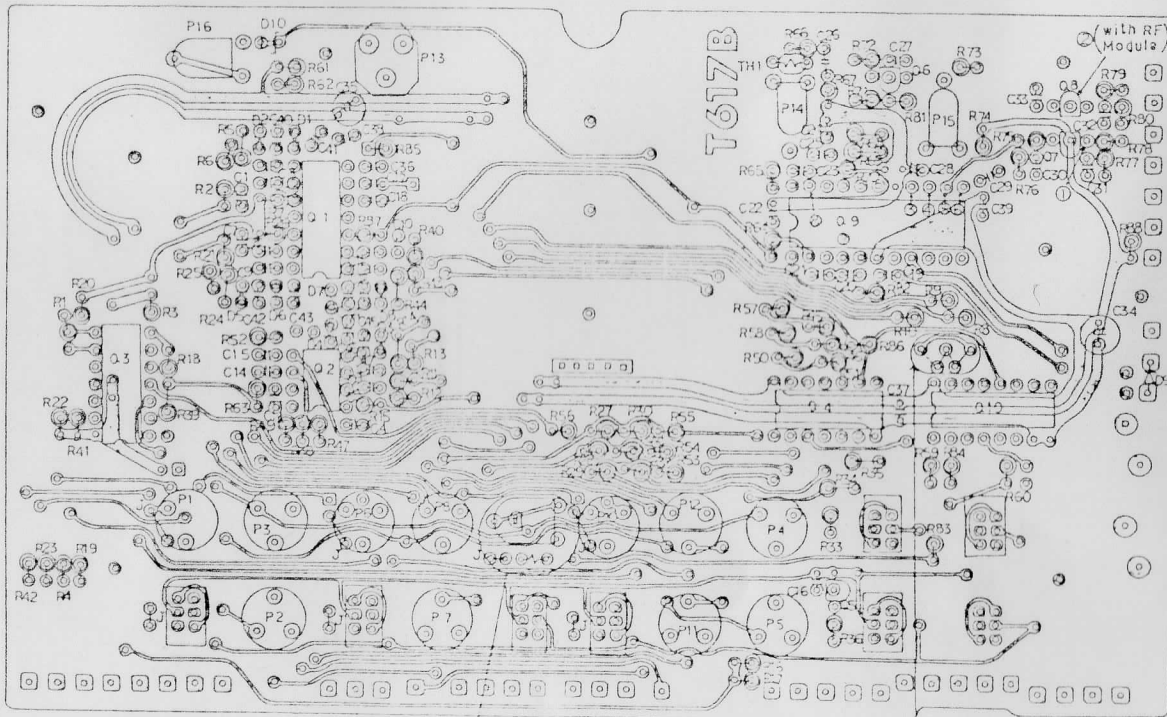
- P1 47K
- P6 47K
  
- P13 1K
- P14 10K
- P15 100K
- P16 20K
  
- Q1 324
- Q3 4066
- Q6 25C458
- Q7 25C458
- Q8 25C458
- Q9 HA16607A
- Q10 14051
  
- TH1 2KD-5
- D9 15R35-100
- D10 UZ688

|     | 1310   | 1520   |
|-----|--------|--------|
| R55 | 33K    | 39K    |
| R68 | 39KF   | 25KG   |
| R69 | 511KF  | 22KG   |
| R70 | 39XF   | 25KG   |
| R71 | 453KF  | 14KF   |
| R74 | 36K    | 47K    |
| R81 | 6.81KF | 2.37KF |
| R82 | 36KF   | 30.1KF |



# T617B P.C.B. ASSEMBLY 7FGE (1310, 1520)

$\frac{1}{5}$  others

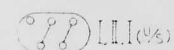


- R1 510
- R2 147KF
- R3 22K
- R4 3.3K
- R5 39KF
- R6 39KF
- R7 18K
- R8 39KF
- R9 39KF
- R10 130KG
- R11 39KF
- R12 39KF
- R13 39KF
- R14 39KF
- R15 18K
- R16 39KF
- R17 39KF
- R18 22K
- R19 33K
- R20 510
- R21 147KF
- R22 22K
- R23 33K
- R24 39KF
- R25 39KF
- R26 18K
- R27 39KF
- R28 39KF
- R29 130KG
- R30 78.7KF
- R31 78.7KF
- R32 240KG
- R33 3.3K
- R34 22K
- R35 22K
- R36 10K
- R37 510
- R38 147KF
- R39 22K
- R40 33K
- R41 39KF
- R42 39KF
- R43 39KF
- R44 39KF
- R45 39KF
- R46 39KF
- R47 78.7KF
- R48 78.7KF
- R49 240KG
- R50 240KG
- R51 130KG
- R52 39KF
- R53 240KG
- R54 78.7KF
- R55 78.7KF
- R56 39KF
- R57 78.7KF
- R58 78.7KF
- R59 120KG
- R60 33KG
- R61 39KF
- R62 39KF
- R63 33K
- R64 10K
- R65 15K
- R66 33K
- R67 33K
- R68 220K
- R69 82K
- R70 10K
- R71 22K
- R72 1K
- R73 33K
- R74 33K
- R75 10K
- R76 22K
- R77 2.2K
- R78 1K
- R79 33K
- R80 33K
- R81 118KF
- R82 33KG
- R83 18K
- R84 1K
- R85 18K
- R86 1K
- R87 18K
- R88 10
- C1 2.2n
- C2 1n
- C3 1n
- C4 1n
- C5 1n
- C6 1n
- C7 1n
- C8 1n
- C9 1n
- C10 1n
- C11 1n
- C12 1n
- C13 1n
- C14 1n
- C15 1n
- C16 1n
- C17 1n
- C18 1n
- C19 1n
- C20 1n
- C21 1n
- C22 1n
- C23 1n
- C24 1n
- C25 1n
- C26 1n
- C27 1n
- C28 1n
- C29 1n
- C30 1n
- C31 1n
- C32 1n
- C33 1n
- C34 1n
- C35 1n
- C36 1n
- C37 1n
- C38 1n
- C39 1n
- D1 152076
- D5 15R35-100
- D9 U2688
- TH1 2KD-5

- P1 4.7K
- P2 4.7K
- P3 4.7K
- P4 22K
- P5 22K
- P6 4.7K
- P7 4.7K
- P8 4.7K
- P9 4.7K
- P10 4.7K
- P11 4.7K
- P12 4.7K
- P13 1K
- P14 10K
- P15 100K
- P16 20K



Symbols J Jumper



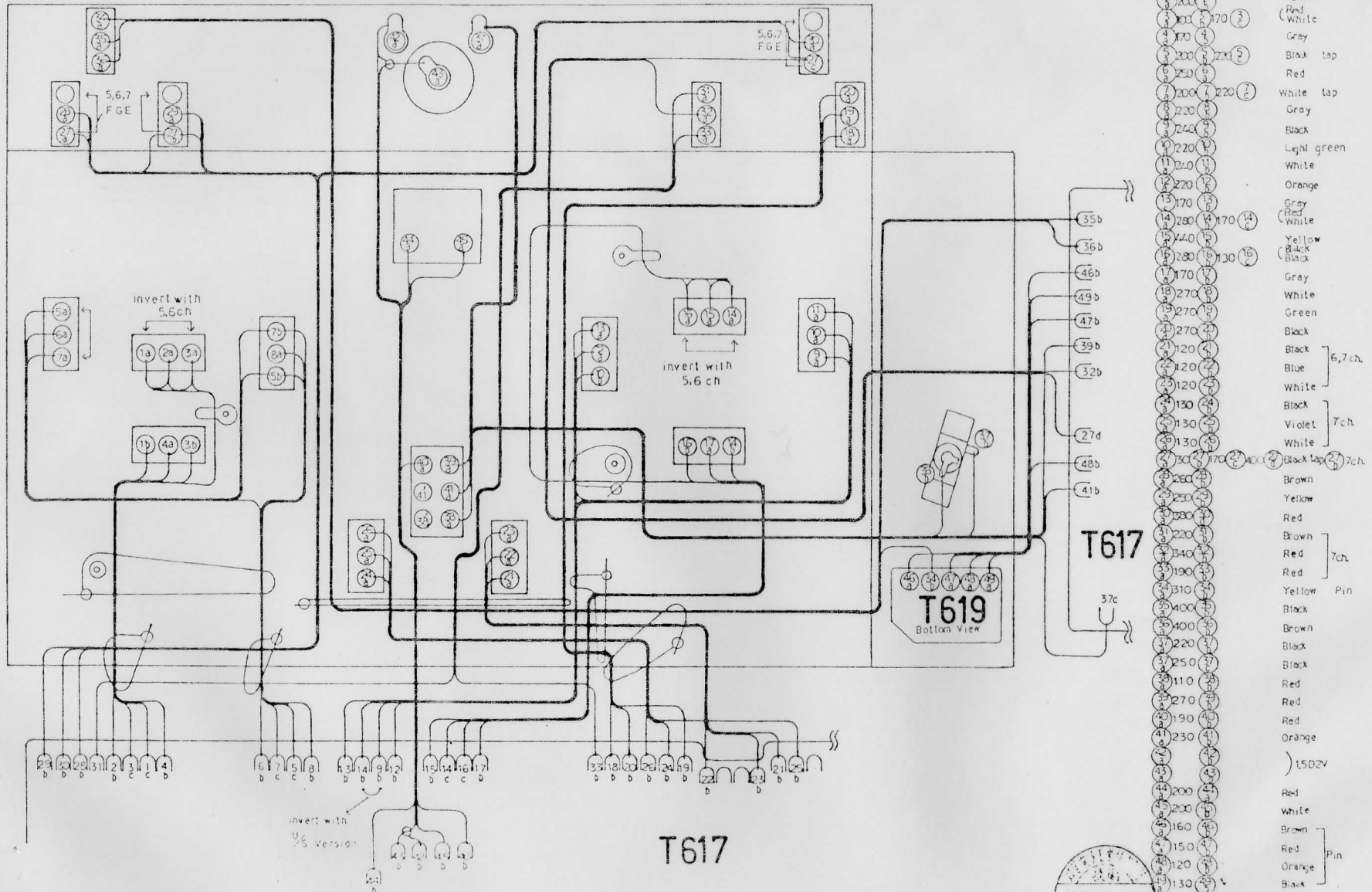
|     | 1310   | 1520   |
|-----|--------|--------|
| R55 | 33K    | 39K    |
| R58 | 39KF   | 25KG   |
| R69 | 51.1KF | 22KG   |
| R70 | 39KF   | 25KG   |
| R71 | 45.3KF | 14KF   |
| R74 | 35K    | 4.7K   |
| R81 | 6.8KF  | 2.37KF |
| R82 | 56KF   | 30.1KF |







# WIRING CHART 5.6.7FGK, E (II, II U<sub>S</sub>)



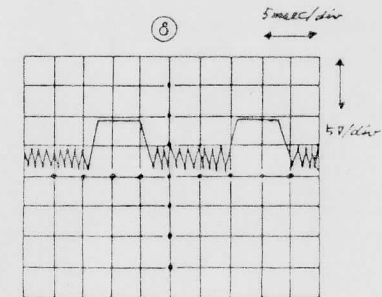
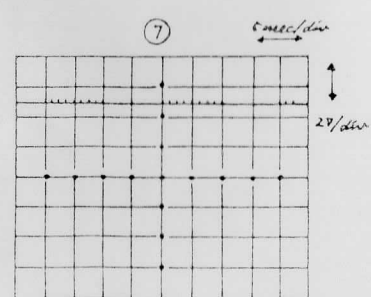
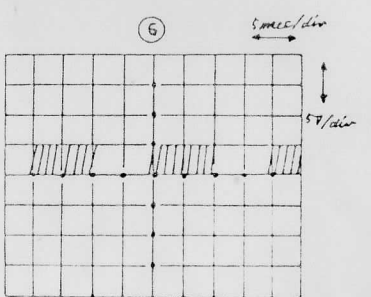
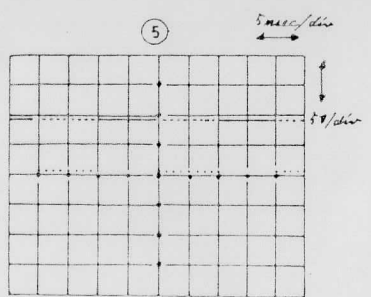
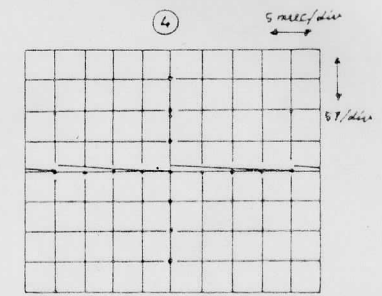
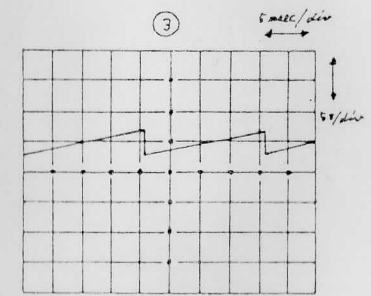
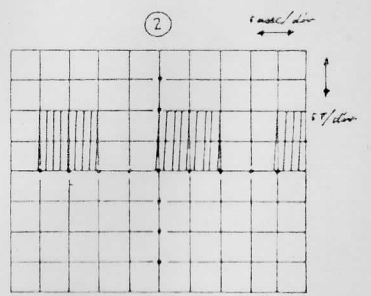
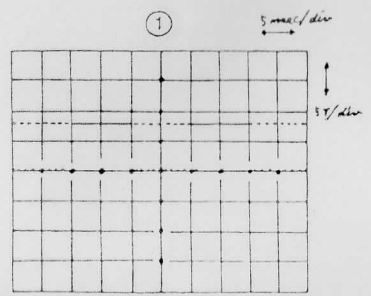
|     |     |     |     |             |
|-----|-----|-----|-----|-------------|
| 1   | 200 | 170 | 1   | (Black)     |
| 2   | 200 | 170 | 2   | Black       |
| 3   | 200 | 170 | 3   | Yellow      |
| 4   | 170 | 170 | 4   | (Red)       |
| 5   | 200 | 221 | 5   | White       |
| 6   | 250 | 170 | 6   | Gray        |
| 7   | 200 | 220 | 7   | Black tap   |
| 8   | 220 | 170 | 8   | Red         |
| 9   | 220 | 170 | 9   | White tap   |
| 10  | 220 | 170 | 10  | Gray        |
| 11  | 220 | 170 | 11  | Black       |
| 12  | 220 | 170 | 12  | Light green |
| 13  | 220 | 170 | 13  | White       |
| 14  | 270 | 170 | 14  | Orange      |
| 15  | 270 | 170 | 15  | Gray        |
| 16  | 280 | 170 | 16  | (Red)       |
| 17  | 280 | 170 | 17  | White       |
| 18  | 280 | 170 | 18  | Yellow      |
| 19  | 280 | 170 | 19  | Black       |
| 20  | 280 | 170 | 20  | Black       |
| 21  | 270 | 170 | 21  | Gray        |
| 22  | 270 | 170 | 22  | White       |
| 23  | 270 | 170 | 23  | Green       |
| 24  | 270 | 170 | 24  | Black       |
| 25  | 270 | 170 | 25  | Black       |
| 26  | 270 | 170 | 26  | Black       |
| 27  | 270 | 170 | 27  | Blue        |
| 28  | 270 | 170 | 28  | White       |
| 29  | 270 | 170 | 29  | Black       |
| 30  | 270 | 170 | 30  | Black       |
| 31  | 270 | 170 | 31  | Black       |
| 32  | 270 | 170 | 32  | Black       |
| 33  | 270 | 170 | 33  | Black       |
| 34  | 270 | 170 | 34  | Black       |
| 35  | 270 | 170 | 35  | Black       |
| 36  | 270 | 170 | 36  | Black       |
| 37  | 270 | 170 | 37  | Black       |
| 38  | 270 | 170 | 38  | Black       |
| 39  | 270 | 170 | 39  | Black       |
| 40  | 270 | 170 | 40  | Black       |
| 41  | 270 | 170 | 41  | Black       |
| 42  | 270 | 170 | 42  | Black       |
| 43  | 270 | 170 | 43  | Black       |
| 44  | 270 | 170 | 44  | Black       |
| 45  | 270 | 170 | 45  | Black       |
| 46  | 270 | 170 | 46  | Black       |
| 47  | 270 | 170 | 47  | Black       |
| 48  | 270 | 170 | 48  | Black       |
| 49  | 270 | 170 | 49  | Black       |
| 50  | 270 | 170 | 50  | Black       |
| 51  | 270 | 170 | 51  | Black       |
| 52  | 270 | 170 | 52  | Black       |
| 53  | 270 | 170 | 53  | Black       |
| 54  | 270 | 170 | 54  | Black       |
| 55  | 270 | 170 | 55  | Black       |
| 56  | 270 | 170 | 56  | Black       |
| 57  | 270 | 170 | 57  | Black       |
| 58  | 270 | 170 | 58  | Black       |
| 59  | 270 | 170 | 59  | Black       |
| 60  | 270 | 170 | 60  | Black       |
| 61  | 270 | 170 | 61  | Black       |
| 62  | 270 | 170 | 62  | Black       |
| 63  | 270 | 170 | 63  | Black       |
| 64  | 270 | 170 | 64  | Black       |
| 65  | 270 | 170 | 65  | Black       |
| 66  | 270 | 170 | 66  | Black       |
| 67  | 270 | 170 | 67  | Black       |
| 68  | 270 | 170 | 68  | Black       |
| 69  | 270 | 170 | 69  | Black       |
| 70  | 270 | 170 | 70  | Black       |
| 71  | 270 | 170 | 71  | Black       |
| 72  | 270 | 170 | 72  | Black       |
| 73  | 270 | 170 | 73  | Black       |
| 74  | 270 | 170 | 74  | Black       |
| 75  | 270 | 170 | 75  | Black       |
| 76  | 270 | 170 | 76  | Black       |
| 77  | 270 | 170 | 77  | Black       |
| 78  | 270 | 170 | 78  | Black       |
| 79  | 270 | 170 | 79  | Black       |
| 80  | 270 | 170 | 80  | Black       |
| 81  | 270 | 170 | 81  | Black       |
| 82  | 270 | 170 | 82  | Black       |
| 83  | 270 | 170 | 83  | Black       |
| 84  | 270 | 170 | 84  | Black       |
| 85  | 270 | 170 | 85  | Black       |
| 86  | 270 | 170 | 86  | Black       |
| 87  | 270 | 170 | 87  | Black       |
| 88  | 270 | 170 | 88  | Black       |
| 89  | 270 | 170 | 89  | Black       |
| 90  | 270 | 170 | 90  | Black       |
| 91  | 270 | 170 | 91  | Black       |
| 92  | 270 | 170 | 92  | Black       |
| 93  | 270 | 170 | 93  | Black       |
| 94  | 270 | 170 | 94  | Black       |
| 95  | 270 | 170 | 95  | Black       |
| 96  | 270 | 170 | 96  | Black       |
| 97  | 270 | 170 | 97  | Black       |
| 98  | 270 | 170 | 98  | Black       |
| 99  | 270 | 170 | 99  | Black       |
| 100 | 270 | 170 | 100 | Black       |



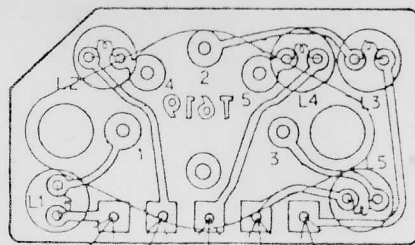
# T617 P.C.B ASSEMBLY

## FP T5.6.7 FG

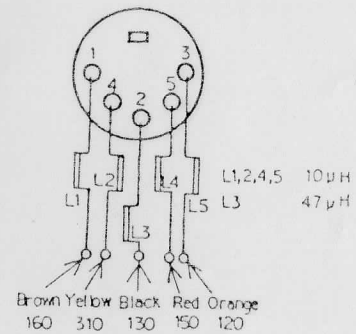
### WAVEFORMS



# T619 5,6,7FG Trainer



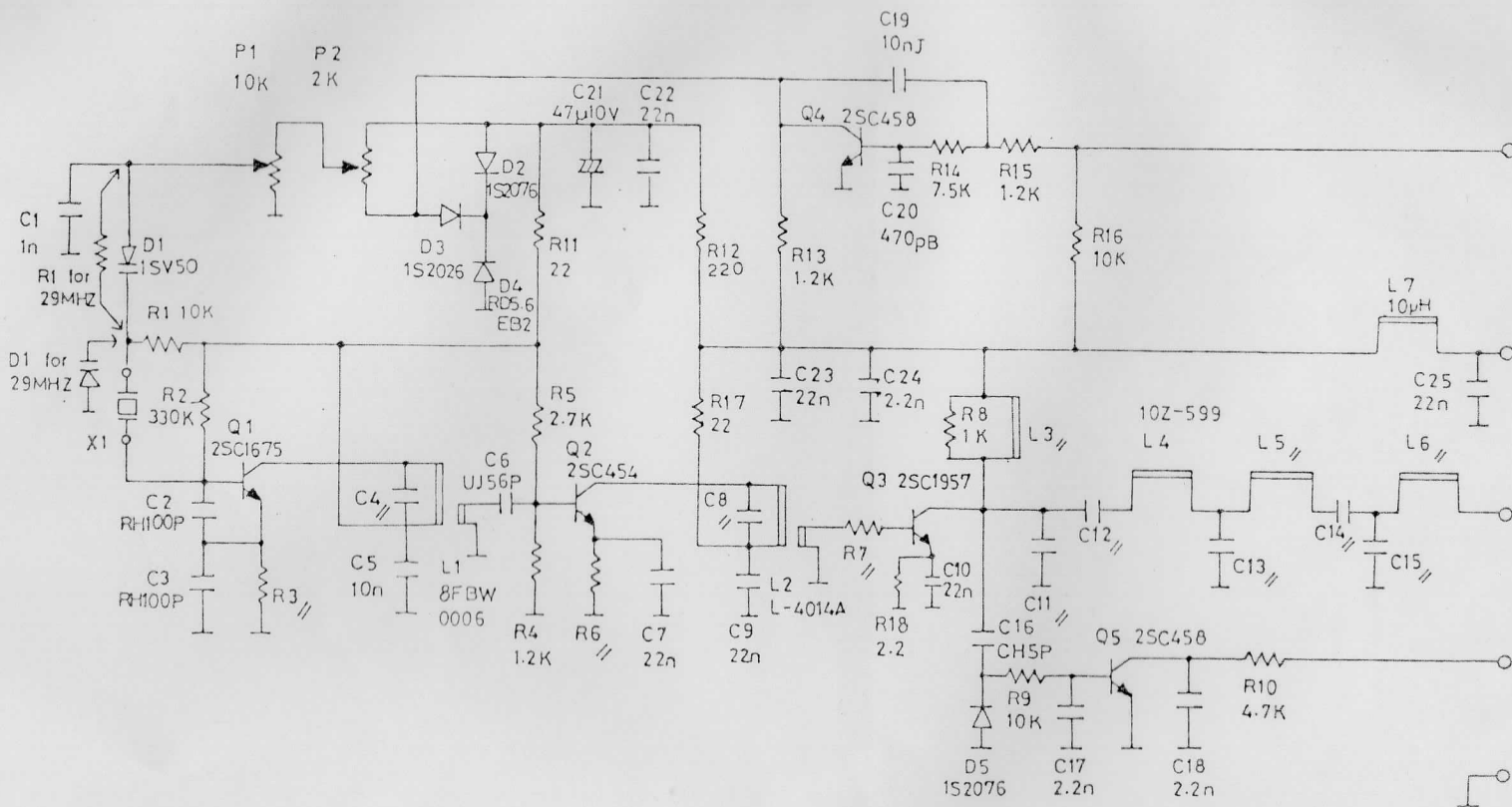
Brown Yellow Red Orange Black  
 160 310 150 120 130



L1,2,4,5 10 $\mu$ H  
 L3 47 $\mu$ H  
 Brown Yellow Black Red Orange  
 160 310 130 150 120

10P-810057

# 27,29,35,36.40 FM For FP-T5,6,7FG T614

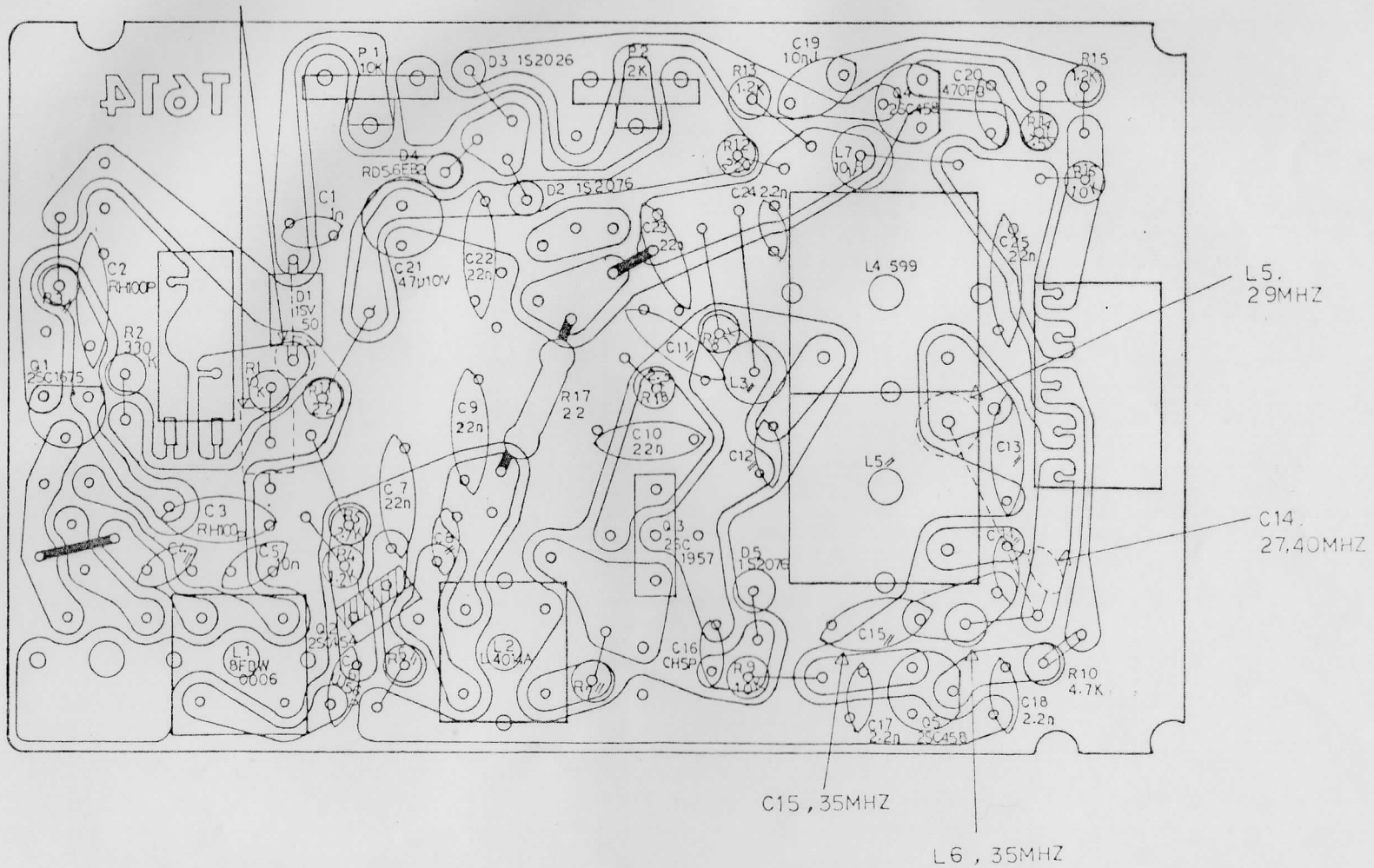


|                   | R3   | R6   | R7   | X1      | C4    | C8    | C11    | C12   | C13    | C14   | C15   | L3          | L5           | L6                  |
|-------------------|------|------|------|---------|-------|-------|--------|-------|--------|-------|-------|-------------|--------------|---------------------|
| 27 <sub>MHZ</sub> | 1 K  | 150n | 15 n | $f_0/2$ | SH39P | SH39P | UJ150p | RH27P | UJ180p | RH27P | —     | 1.0 $\mu$ H | 8FBV<br>0002 | jump<br>with<br>C14 |
| 29                | 1 K  | 150n | 12 n | $f_0/2$ | SH39P | SH39P | UJ150p | RH27P | UJ180p | —     | —     | 1.0 $\mu$ H | 1.5 $\mu$ H  | jump<br>with<br>L5  |
| 35,36             | 1 K  | 150n | 12 n | $f_0/2$ | RH27P | RH18P | UJ150p | RH22P | UJ180p | RH22P | CH56P | 1.0 $\mu$ H | 10Z<br>599   | 1.0 $\mu$ H         |
| 40                | 680n | 100n | 10 n | $f_0/3$ | RH15P | RH18P | RH100p | RH22P | UJ180p | RH27P | —     | 10 $\mu$ H  | 10Z<br>599   | jump<br>with<br>C14 |



# T614 27, 29, 35, 40FM For T5, 6, 7FG

D1, R1, 29MHZ

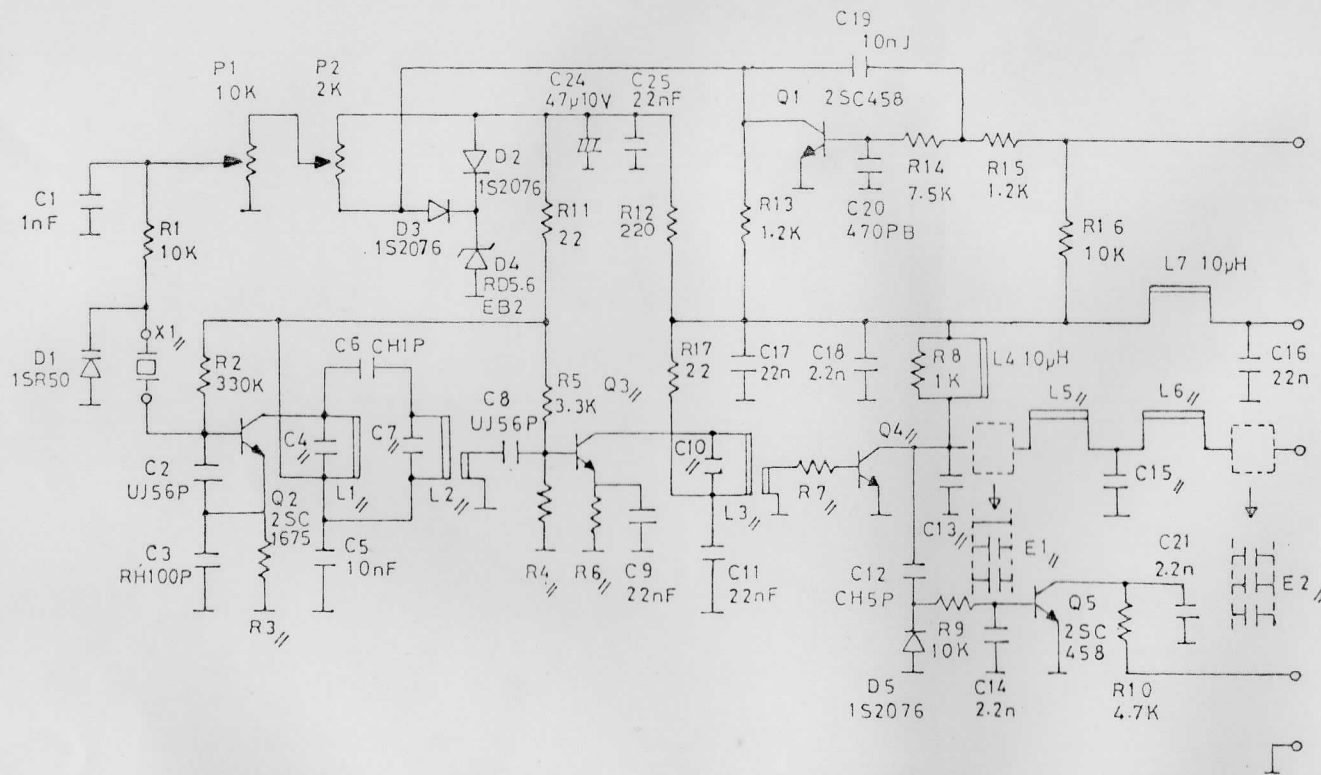


|           | R3   | R6   | R7  | X1      | C4    | C8    | C11    | C12   | C13    | C14   | C15   | L3    | L5           | L6               |
|-----------|------|------|-----|---------|-------|-------|--------|-------|--------|-------|-------|-------|--------------|------------------|
| 27<br>MHZ | 1 K  | 150n | 15n | $f_0/2$ | S-33P | SH39P | UJ150p | RH27P | UJ180p | RH27P | —     | 1.0uH | 8FBV<br>0002 | jump<br>with C14 |
| 29        | 1 K  | 150n | 12n | $f_0/2$ | S-33P | SH39P | UJ150p | RH27P | UJ180p | —     | —     | 1.0uH | 1.5uH        | jump<br>with L5  |
| 35,36     | 1 K  | 150n | 12n | $f_0/2$ | R-27P | RH13P | UJ150p | RH22P | UJ180p | RH22P | CH56P | 1.0uH | 10Z<br>539   | 1.0uH            |
| 40        | 680n | 100n | 10n | $f_0/3$ | R-15P | RH13P | RH100p | RH22P | UJ180p | RH27P | —     | 10uH  | 10Z<br>539   | jump<br>with C14 |





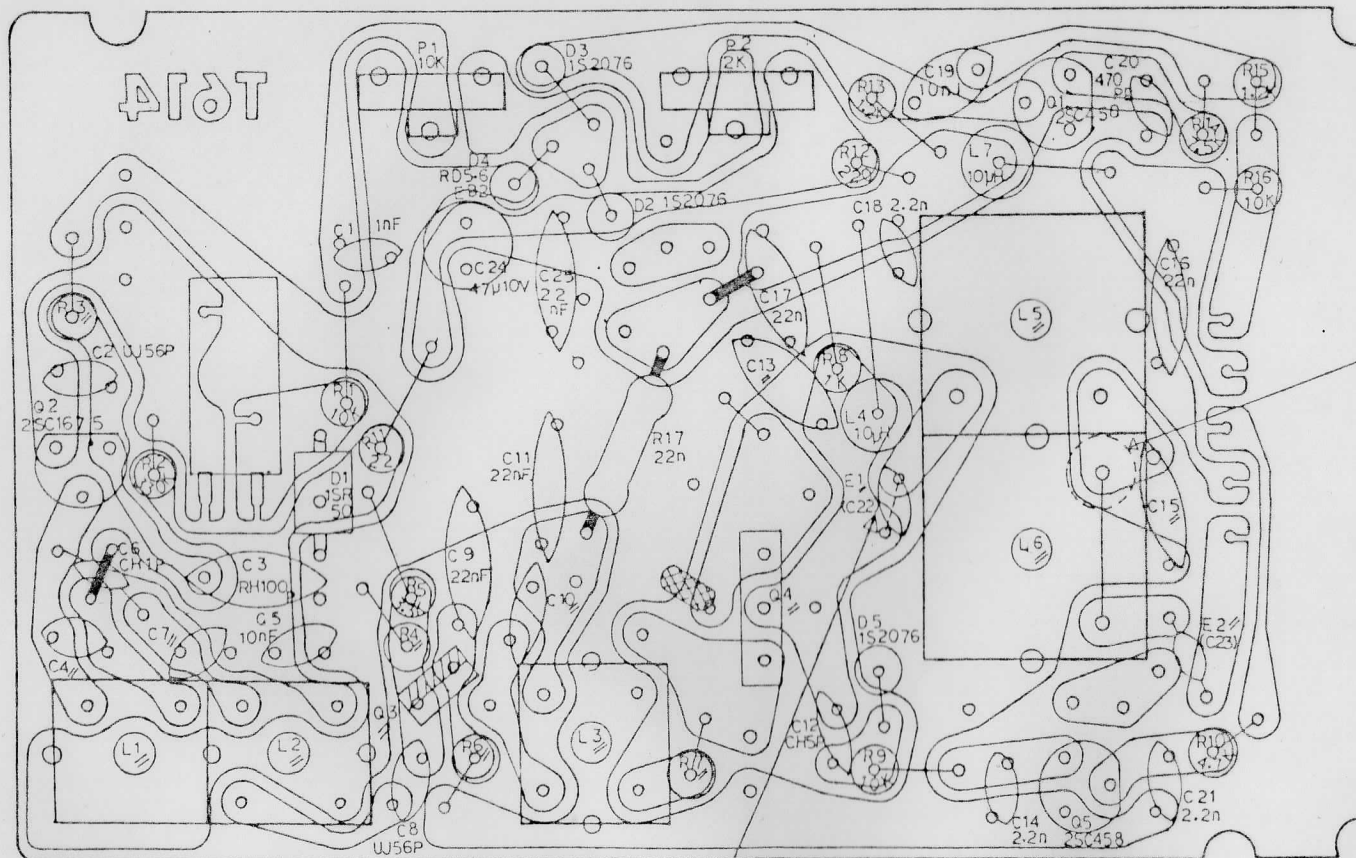
# 53,54,60,72 FM For FP-T5,6,7FG T614



|              | R3   | R4    | R6   | R7   | X1      | C4,7  | C10   | C13    | C15    | L1,L2    | L3       | L5           | L6           | E1            | E2           | Q3          | Q4          |
|--------------|------|-------|------|------|---------|-------|-------|--------|--------|----------|----------|--------------|--------------|---------------|--------------|-------------|-------------|
| 53,54<br>MHZ | 680n | 1Kn   | 150n | 36n  | $f_0/3$ | RH27P | RH18P | UJ220P | UJ220P | L272-60C | L272-60C | 8FBV<br>0004 | 0.33μH       | Wire          | C22<br>2.2nF | 2SC<br>461  | 2SC<br>2339 |
| 60           | 680n | 1.2Kn | 100n | 2.2n | $f_0/3$ | RH22P | RH22P | CH68P  | UJ180P | L272-60C | L272-60C | 8FBV<br>0003 | 8FBV<br>0003 | C22<br>RH33P  | C23<br>SH39P | 2SC<br>461  | 2SC<br>1957 |
| 72           | 560n | 1.2Kn | 68n  | 1n   | $f_0/5$ | RH33P | RH33P | RH100P | UJ150P | L7216A   | L72160   | 8FBV<br>0003 | 8FBV<br>0003 | C22<br>RH27PF | C23<br>RH18P | 2SC<br>2009 | 2SC<br>1957 |



# T614 53.54.60.72 FM For T5.6.7FG

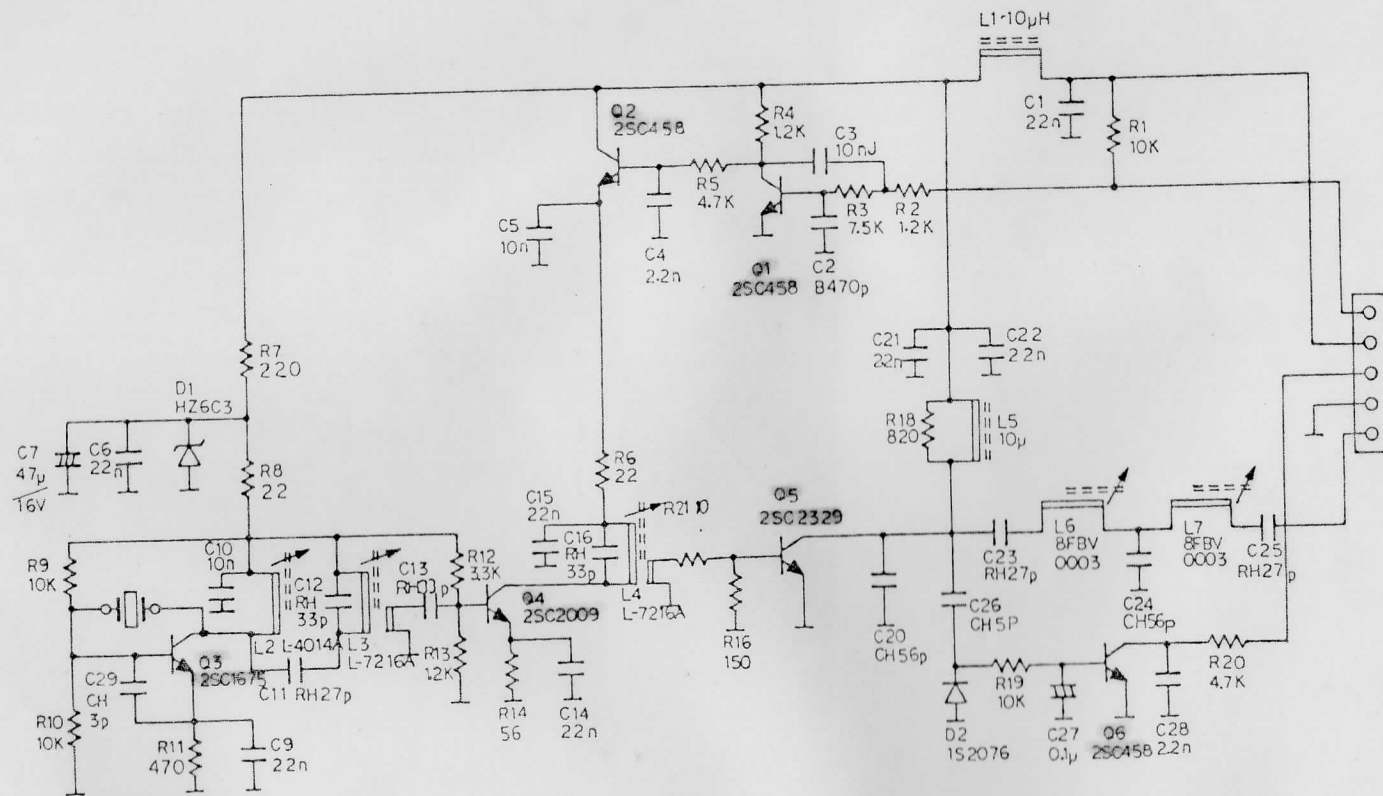


Jumper, 53, 54 MHz

|              | R3   | R4    | R6   | R7   | X1      | C4,7  | C10   | C13    | C15    | L1 L2    | L3       | L5           | L6           | E1            | E2           | Q3          | Q4          |
|--------------|------|-------|------|------|---------|-------|-------|--------|--------|----------|----------|--------------|--------------|---------------|--------------|-------------|-------------|
| 53.54<br>MHZ | 680n | 1K n  | 150n | 36n  | $f_0/3$ | RH27P | RH18P | UJ220P | UJ220P | L272-60C | L272-60C | 8FBV<br>0004 | 0.33uH       | Wire          | C22<br>2.2nF | 25C<br>461  | 25C<br>2339 |
| 60           | 680n | 1.2Kn | 100n | 2.2n | $f_0/3$ | RH22P | RH22P | CH68P  | UJ180P | L272-60C | L272-60C | 8FBV<br>0003 | 8FBV<br>0003 | RH33P         | SH39P        | 25C<br>461  | 25C<br>1957 |
| 72           | 560n | 1.2Kn | 68n  | 1n   | $f_0/5$ | RH33P | RH33P | RH100P | UJ150P | L7216A   | L72160   | 8FBV<br>0003 | 8FBV<br>0003 | C22<br>RH27PF | C23<br>RH18P | 25C<br>2009 | 25C<br>1957 |

56.11.21

# T614 5,6,7FG RF 72,75AM



10R-810053

9.Apr.1981

