

# New Controlaire Superhet Sub-Miniature Receivers



## 10 Channel SH-20

Electronically, the new 10 Channel Controlaire Superhet is very similar to the SH-10 that we also illustrate in this catalog. The new SH-20 receiver is very small - probably the smallest 10 channel Superhet receiver on the market. The weight is just under 3 1/2 oz. The physical size is 2" long x 1-11/16" wide x 1 1/2" high. The reed bank is fastened to the lid of the receiver and the balance of the receiver is mounted in the lower compartment. Actually, the receiver could have been made smaller if the standard aluminum .032" case had been employed. (.040" thick aluminum was employed in the case to add greater strength and this contributes slightly to the somewhat greater size of the receiver.) You will also note in the case design that the lower case is flanged the long way to give a much stiffer configuration where the case supports the epoxy glass printed circuit board.

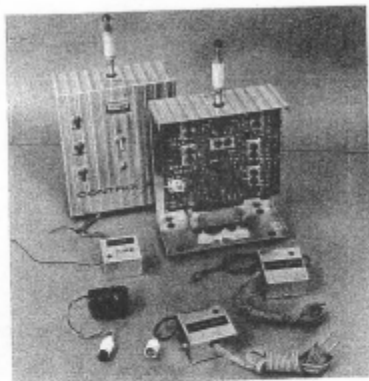
## Tech. Specs.

The technical specs are basically the same as those for the S/Het 10 which are outlined in the technical notes on Controlaire by Jack Port.

SH-20 (Medco Bank)..... \$79.98  
SH-20 Kit ..... 54.98

NOTICE HOW THE NEW SUPERHET  
10 CH FITS INTO 1/2 A FUSALAGE

## CUSTOM 10 ch.

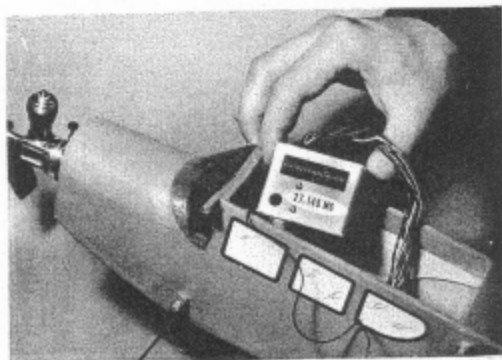


### Connectors wired up

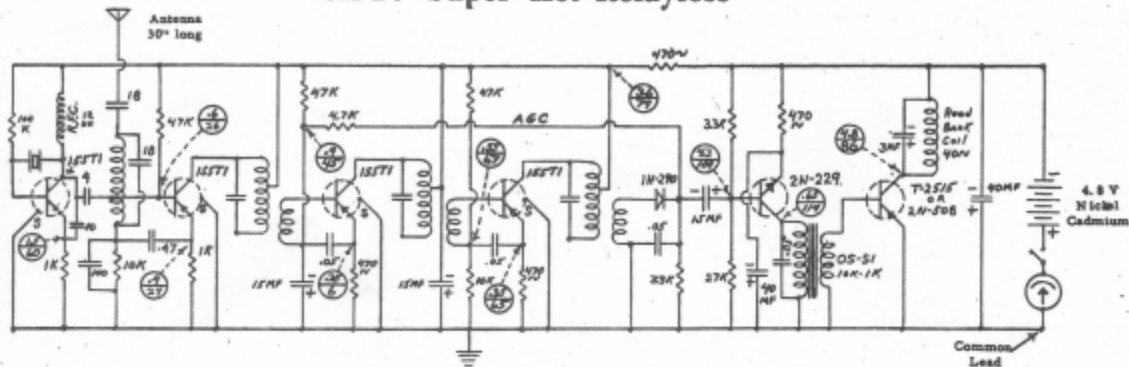
The Custom Controlaire (dual simul) 10 Channel includes nickle cadmium batteries for both Tx (installed) and Rx plus (2) Controlaire chargers. The plug is wired in on both the Tx charger and the Rx charger. The 500 mah nickle cadmium battery supply is wired up to a connector. The Rx charger plugs right into the power supply; a separate plug (not wired) is provided for the receiver installation. The Rx is the new tiny Controlaire SH-20. We have listed below what you get with a Controlaire Custom 10. Note that it totals out slightly higher than the \$225.00 we are asking.

Controlaire MTT - 10 Tx . . . . .	\$ 99.98
Controlaire SH - 20 Rx . . . . .	\$ 79.98
Controlaire Tx charger and battery pak . . . . .	\$ 24.98
Controlaire Rx charger and battery pak . . . . .	\$ 21.98
	<u>\$226.92</u>

SPECIAL CUSTOM 10 **\$225.00**



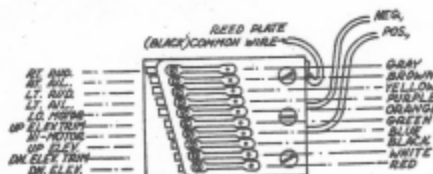
# SH-20 Super Het Relayless



Voltage measurements taken with Heathkit IM-13, V. T. V. M. 5 volt, minus DC scale. Common lead to plus 4.8 volt receiver battery. Receiver idling, no signal from transmitter. Note divided circles on diagram, top No voltage measured, lower No is circuit board hole that identifies copper lead to which place DC probe. Normal measurement can vary plus or minus 20% due to component tolerances.

## Reed Bank Frequencies

Reed Number	Old OS 10 Channel	New OS 10 Channel	Medco	Function
1	465	550	655	Down elevator
2	430	525	620	Down elevator trim
3	420	490	590	Up elevator
4	395	460	550	Hi motor
5	375	440	510	Up elevator trim
6	360	415	480	Low motor
7	340	390	445	Left aileron
8	315	365	420	Left rudder
9	295	335	385	Right Aileron
10	290	320	355	Right rudder



MEDCO REED BANK 10 CHANNEL

