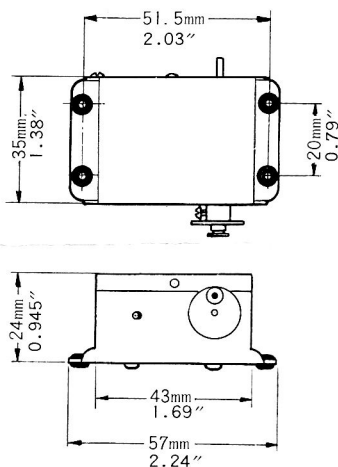


O.S. MINITRON 1 CHANNEL SERVO INSTRUCTION



RUDDER SERVO Model S-103

This is a break-through in single channel control actuator. Combines the power of a servo with the speed of an escapement. Features a powerful high quality five pole motor. All contact and switcher boards are made from heavy duty epoxy board with non-corrosive plated copper switching surfaces. Output wheel has a set screw for adjusting neutral position of control surface. This servo has a compound action and is intended for use with a relay type receiver.

Motor control can be obtained by the use of O.S. Motor control servo (S-104M) or an Motor control escapement (S-2 or S-4).

MOTOR CONTROL SERVO Model S-104M

This is a three speed motor control servo. It requires one pencell for a battery supply when used O.S. Rudder servo (S-103).

WIRING DETAIL

